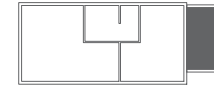


# M12



PRZYZIEMIE

**22,20** m<sup>2</sup>

SALON

FIRST LEVEL

**22,20** m<sup>2</sup>

LIVING ROOM

PIĘTRO

**49,90** m<sup>2</sup>

2 POKOJE ( SYPIALNIA + KUCHNIA )

SECOND LEVEL

**49,90** m<sup>2</sup>

2 ROOMS ( BEDROOM + KITCHEN )